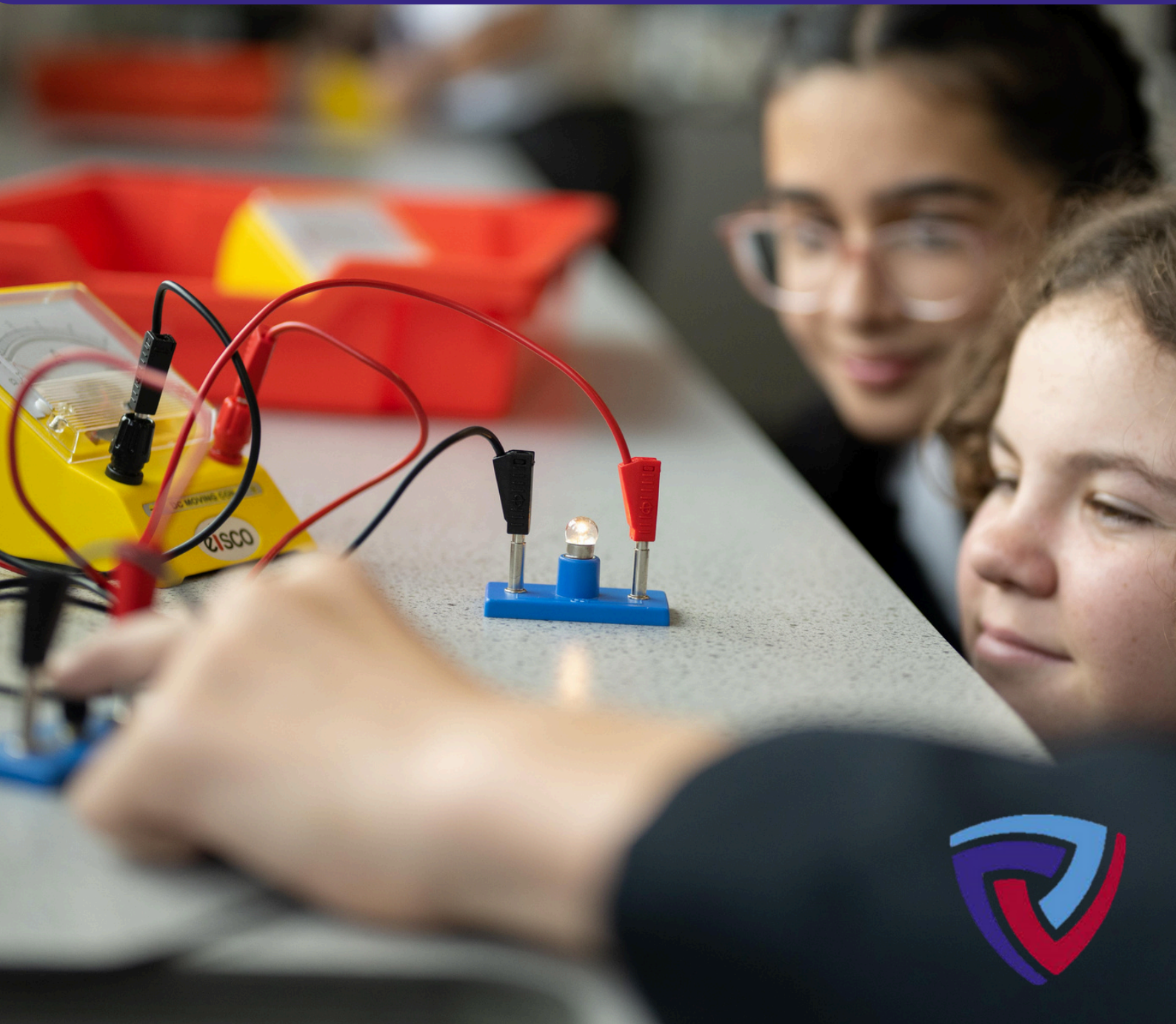


YEAR 6 TRANSITION GUIDE



2025



A MESSAGE FROM YOUR HEAD OF YEAR

Welcome to the beginning of an exciting journey at our school! As you step into Year 7, you are not just moving up a school, you're stepping into a world of new opportunities: learning, friends, clubs, activities, and you will do lots of growing up with us. Can you imagine who you will be and what you will be ambitious for in your life by the time you leave in Year 11 or 13? Turing House School is so thrilled to welcome each and every one of you to our community. We believe that every student brings their own unique talents, dreams, and perspectives, making our school a richer place for everyone.

As Head of Year, I will be here to guide and support you throughout your time here. I will uphold the highest expectations of you as individuals and as a year group I will expect you to embody our school values: Perseverance, Creativity, Leadership, Modesty and Curiosity. You will each have a form tutor who you will see every day, and I will be working closely with them to ensure your transition to secondary school goes as smoothly as possible. We are excited to get to know each and every one of you - see you in September!

Mr Newman
Head of Year 7





THE SCHOOL DAY

At Turing House School we follow a one week timetable which you will be given a copy of on your first day.

The timetable will tell you what lesson you have when, where it is, and who your teacher will be.

Everyone has break and lunchtime at the same time each day, but for the first half term we will ensure that Year 7 students have an early lunchtime, so that they have extra time to get to know each other, and become familiar with the layout of the school.

YOUR FIRST DAY

We are keen to help you settle into Turing House as quickly as possible and hope you are looking forward to coming to school. We know you will miss your old school, so we aim to make your first day with us as memorable as possible. We have a fun teambuilding day planned.

The night before, remember to:

- Pack your bag
- Lay out your uniform
- Set your alarm
- Get lots of sleep

On your first day:

- Arrive by **8:30am**. We will meet you in the playground.
- You will spend some time in your tutor group and be given your new timetable.
- Your teachers will collect you from each lesson and show you the way to the next one.
- You will be able to ask any questions you have.





SOCIAL TIMES

You can spend break and lunchtime either in the canteen or outside. There are tables both inside and outside. Outside lots of students choose to play football, basketball and table tennis. During the summer we also open up part of our field for you to enjoy. Finally, in addition to this we have a 'Quiet Room' for those who prefer that space.



UPCOMING EVENTS

- Online Presentation to Families - 3/7/2025 - a one-hour Q&A session with the Headteacher and Head of Year
- Year 7 Online Settling In Evening - Autumn Term 2025 - a chance for your family to meet with your tutor.
- Year 7 SEND Evening - Autumn Term 2025 - a chance for families of children with SEND to come to an information evening.
- Year 7 Information Evening - November 2025 - a chance for families to learn more about Turing House School.
- Year 7 BINGO - Autumn Term 2025 - an evening organised for families and students by 'Turing House Friends.'

THE SCHOOL DAY

Our school day follows the below timings. We will help you move around each lesson in your first few days.

8:30-9:20am	Lesson 1
9:20-10:10am	Lesson 2
10:10-10:35am	Tutor Time
10:35-11:00am	Break
11:00-11:50am	Lesson 3
11:50-12:40pm	Lesson 4
12:40-1:20pm	Lunch
1:20-2:10pm	Lesson 5
2:10-3:00pm	Lesson 6
3:00-4:00pm	Clubs



READING

At Turing House, we ensure that there is an embedded culture of reading for pleasure, and understanding that we need to read to gain knowledge, ideas and inspiration. You will read throughout the day and have access to a variety of books.

We made you all a Reading Challenge of 100 books, and gave you a poster of these books at our 'Meet The Teachers' evening.

We encourage you to join your local library and read some of these books over the summer holidays.

THE YEAR 7 CURRICULUM

A school curriculum is the structured plan of what you learn during your education. It includes subjects, topics, and skills that you study in different year groups. Curriculums vary by country, school, and educational system. You can think of it as a roadmap guiding your learning journey.

At Turing House you will be taught in mixed ability classes. We build upon the high standards set at Key Stage 2 (Primary School) and work closely with your primary schools to ensure that our Year 7 curriculum is relevant, engaging and challenging.

You can see what is on your Year 7 curriculum [here](#).



"My favourite thing about Turing House School has been the opportunity to meet new people and make new friends. It has been exciting being part of such a big year group for the first time!"

Year 7 Student, 2024



PE KIT

When you have your timetable you will know on which day of the week you have a PE lesson. On this day you will bring in your PE kit and change into it at the time of the lesson.



SCHOOL UNIFORM

If there are still any pieces of uniform which you need, Stevensons & School Days have a good supply. The full uniform and equipment list is on our website [here](#).



PASTORAL PROVISION

When you join Turing House you will be put into tutor groups, which you will remain in until Year 11. Each tutor oversees the progress of their tutees. Your family will be encouraged to initially contact your tutor with any pastoral concerns, as they will have daily contact with you and will be best placed to offer support and advice.



Tutor
TBC

Head of Year
Mr Newman

**Year 7 Link Assistant
Headteacher**
Ms Harper

**Deputy
Headteachers**
Ms Nicholson & Ms
Collins

Headteacher
Mr O'Sullivan

You can also access the [PLUS team](#) where we have further staff dedicated to supporting your needs.



STUDENT SURVEY

Many of you have now completed the survey which we will use to get to know you better. For those of you that have not completed this survey, the link is [here](#).



MOBILE PHONES

We recognise that phones may be necessary before and after school for some of you, but students must have their phones switched off and in their bags when they are at school. All urgent contact can be made through the school reception.

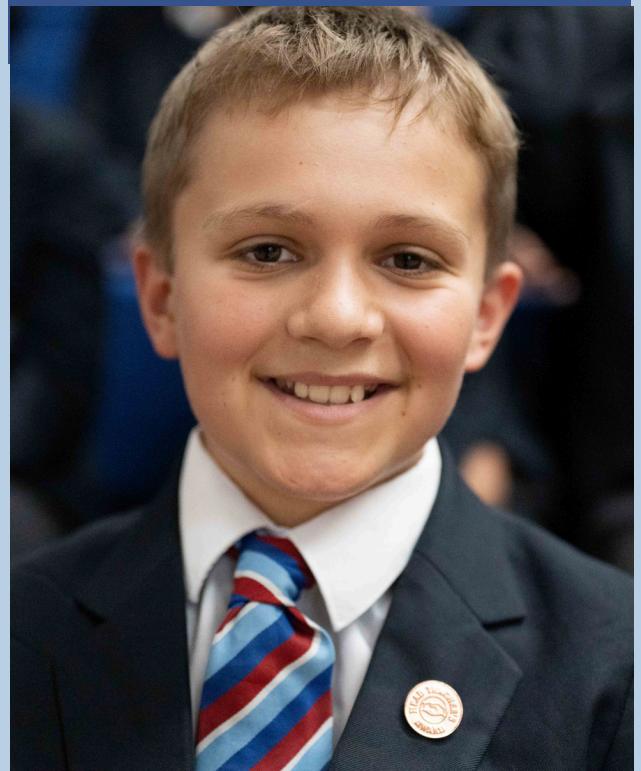


PARENT PAY

We are a cashless school that uses a payment system called ParentPay, avoiding the necessity to bring money into school.

This system will be used for all trips, clubs and more.

A letter will be sent to your families before September 2025 with login details and a temporary password.



ATTENDANCE

The key to academic success and general wellbeing at school is having excellent attendance. We expect you to attend school every day and to be on time. You families will use StudyBugs to let us know if you are unable to attend.



OUR ICT SYSTEMS

When you arrive you will be given a school Microsoft 365 (MS 365) account. You will use this to log in to computers on the school network with your username and password. Your username will follow a standard format. For example, Joe Bloggs who started Year 7 in September 2021 would have a username of 21bloggs.j.

Network passwords are usually set in your first ICT lesson in Year 7. You can reset them at any time from a school PC by pressing the Ctrl-Alt-Del keys all at the same time and following the instructions that appear. If you are at home, then you will need to email the school office at info@turinghouseschool.org.uk to request a password reset.

You can also log into your MS 365 account from home. As well as using the applications via a web browser, your accounts entitle you to install desktop versions of the MS 365 applications (Teams, Word, Excel, PowerPoint etc) for school use. To download the software you should log into your MS 365 account online and click "Install Office" which should be in the top right hand corner of the landing page. Then follow the instructions to download and install the software.



PUNCTUALITY

You should arrive on the school site before 8:25am and be in your first lesson at 8.30am. You will be marked late to school if you arrive after 8.30am.

If you are late due to circumstances outside of your control, please ask your family to email attendance@turinghouseschool.org.uk or call the absence line 02080696100 to let the office know.

Poor punctuality can have a significant disruptive impact on your learning. If you are late up to ten minutes, you will receive a late detention at breaktime on the given day, for ten minutes. If you are late by more than ten minutes, you will receive a thirty-minute late detention on the given day. In the rare instance that you arrive late after registers close at 9.00am, this will be marked as an unauthorised absence for the whole morning session in accordance with protocols set out by the Department for Education.

If you would like to discuss your own circumstances or if you are worried about anything related to attendance or absence from school please ask your family to contact your tutor or Head of Year, or by emailing attendance@turinghouseschool.org.uk



MICROSOFT TEAMS

Once you have logged into Microsoft 365 (as above) you will be able to access Microsoft Teams. Teachers often use this to communicate with you. They will tell you if they have set up a Team for their class.

Student communications via MS Teams are monitored and moderated. Conversations should not be considered private, and any inappropriate usage will be reported to school staff.

Microsoft Teams may sometimes be used for remote learning, including live streaming of lessons.



SAFEGUARDING

Ms Collins is our Safeguarding Lead. Safeguarding refers to measures taken to protect the health, well-being, and human rights of individuals, especially children and young people. We look forward to introducing you to her.



BROMCOM AND MORE

Bromcom is a Management Information System, used to manage many aspects of school administration. Our School ID for BromCom is 12447.

You will use the Bromcom Student Portal to see what homework has been set and check your timetable. As long as you are already logged into your Microsoft 365 account (see above) you will be able to click the single-sign-on button at the bottom of the login screen.

Your family can use Bromcom's parent portal, which is called MyChildAtSchool (MCAS). It includes information about your attendance and behaviour, homework, reports, as well as most of the messages sent to families by the school (though some messages may be sent directly to families' email accounts instead). To log into MCAS for the first time, families need to use the email address that they have registered with the school as their username, and follow the instructions in the school's invitation email. They will then choose their own password. Subsequent logins will only need their email address and the chosen password. For more information, see the MCAS Parent Guide.

You will also be shown how to use some other sites including:

- Seneca - for all subjects
- DrFrostMaths - for Maths
- ActiveLearn - for Spanish
- Carousel - for Science
- Sparx Reader - for English



HOMEWORK

Homework can be an incredibly powerful way to improve student learning and is an essential part of schoolwork at Turing House School. We value homework highly as we want you to form positive habits, and a mindset that learning is not confined to the classroom. Homework gives you agency and helps you to learn how to study independently. Research from the Education Endowment Foundation suggests that homework has a positive impact on average of +5 months of learning for students, particularly for pupils in secondary schools.

We recognise that some of you may not have a quiet space for home learning – and therefore we support home learning via our homework club for pupils which run each day from 3-4pm in the school's ICT room. This is open to all students who want some help with their homework; want to use the ICT resources or who simply want a quiet place to complete homework. You don't have to stay for the whole time, though you are welcome to do so.

When you join, we will give you a homework timetable which tells you which subjects will set you homework and how often.

CLUBS

We offer a wide range of sporting, musical, creative and other clubs for free. Most clubs run from 3-4pm, although some activities operate at lunchtime or before school. We encourage all of our students to participate, though we are aware that many already have heavy commitments outside of school that may prevent them from being able to do so. Unless otherwise specified, all clubs are for everyone. The programme of activities varies seasonally, and evolves from year to year, taking students' interests into account. Updates about clubs are published in our school newsletter. We'd recommend you take part in the school show!





GETTING TO SCHOOL

Many of our students live within walking distance of the school and use this to their advantage to be able to walk to school. If you cycle to school, you can lock your bike up in our cycle area.

Many other students make use of our local bus service, which stops on the school site. Please remember that when travelling to and from our school on public transport, you are representing the school and as such your behaviour should uphold the school's excellent reputation.

If being dropped off by car, please do not enter our school car park; however disabled bays are marked for those of who have a physical disability and need to be dropped off inside the school. Please avoid drop off in Montrose Road and Stirling Road.



MUSIC

You will have plenty of incredible opportunities to experience music-making at Turing House. We offer a variety of co-curricular opportunities at Turing House School for students of all musical abilities and interests. For vocalists, Turing House Singers is an excellent opportunity to be part of a choir and perform in events onsite and in the community. Our Orchestra is open to instrumentalists of all abilities and Band Club is available to those instrumentalists and vocalists who are interested in pop genres. Other co-curricular opportunities will be announced in September.

At Turing House School, you also have the opportunity to study a musical instrument at an additional cost. Tuition is provided by Richmond Music Trust and we offer tuition on Piano/Keyboard, Drum Kit, Electric/Acoustic Guitar, Voice, Trumpet, Cello, Violin and Viola. Tuition is available on other instruments subject to availability of peripatetic staff. Your family can enrol you in order to start tuition in September: - [Apply Now - Richmond Music Trust](#). If you already receive tuition at your Primary School, your family must inform Richmond Music Trust of your wish to transfer their lessons to Turing House School.



SANCTION SYSTEM

In the event that you make a mistake or the wrong choice, we have a system of sanctions which are outlined below:

Teacher Detention	You'd spend some time with your teacher reflecting on your choice and putting things right.
Pastoral or Department Detention	You'd spend some time with a Head of Year or Department reflecting on your choice and putting things right.
Senior Leader Detention	You'd spend some time with a Senior Leader reflecting on your choice and putting things right.
Internal Isolation Room (IIR)	You'd spend a day out of your normal lessons and social time reflecting on your choice and putting things right.
Off Site Provision	You'd spend a short time at another school reflecting on your choice and putting things right.
Suspension	You'd spend a short time at home reflecting on your choice and putting things right.
Off Site Direction	You'd spend a longer time at another school reflecting on your choice and putting things right.
Permanent Exclusion	Your time at Turing House School would end and you'd have a new start at another school.



HAIR AND JEWELLERY RULES

Like all schools, we have some rules around hair styles and jewellery.

We ask that your hair is a standard school style: this means that the colour must be a natural shade, with no extremes in hair dye or style. Any hairbands, clips or ribbons should be plain, neutral, black or navy.

You can wear just one stud earring in each ear measuring no more than 5mm in diameter. Furthermore, watches are optional; but smart watches are not permitted. We do not permit rings, necklaces, chains or bracelets, including charity bands, to be worn. No other forms of body piercing are acceptable.



OUR CANTEEN

Our canteen sells lots of delicious and nutritious food. We are a nut free school, and all products have clear dietary labels. Our students say their favorites are:

- “Fish and chip Fridays”
- “The garlic bread is really tasty”
- “Radnor Splash is my favourite drink on a hot day!”
- “The curries on a Thursday are great”

We are also cashless. During your first day with us we will scan your fingerprints so that you can use these to pay for any food you buy.

The menus shown are for the academic year 2024/25 and are subject to change.

DRINKS	PRICE	BREAKFAST	PRICE
Water 500ml	£1.10	Breakfast Roll	£1.55
Fruit Slush – Med/Lrg	£1.10/£1.45	Mini Breakfast Baguette	£1.55
Capri Sun	£1.30	3 Piece Breakfast Pot	£2.10
Dalston Cans	£1.40	Toast with Butter or Jam	£0.35
Radnor 200ml Carton	£1.10	Pancake with Topping	£1.25
Milk / Flavoured Carton	£1.10	Waffle with Topping	£1.65
HOMEBAKES		Pastries & Croissants	£1.65
Muffins	£1.30	Cereals + Milk (8oz)	£1.00
Small Cakes	£1.00	Porridge for Staff	£1.00
Cookies/Brownie	£1.30	Porridge for Students	Free
Chocolate/Cheese Straw	£1.30	Porridge Toppings	£0.45
HOT GRAB & GO		COLD GRAB & GO	
Ciabatta/Bagel	£2.65	Blue Dot Roll	£1.10
Panini – Half/Whole	£1.55/£2.65	Deli Sub Roll/Sandwich	£2.20
Toastie - Half/Whole	£1.10/£2.20	Wrap	£2.65
Korean Crispy Chicken	£2.65	Naturally – Premium Salad	£3.00
Tandoori Chicken Naan	£3.00	Basic Baguette/Premium Baguette	£2.35/£2.65
Wrap/Twister	£2.65	Half Baguette	£1.55
Chicken Wings	£2.30	Cold Pasta Pot 16oz	£2.50
Shawarma	£2.65	Vegetable Sticks with Humous	£1.60
Pizza Slice (Break Time)	£1.55	Protein Pots	£1.00
Chicken Fajita Taco Boat	£3.00	Salad Pots	£2.00
Hot Bowls	£2.65	Yoghurt/Jelly/Fruit Pots	£1.00
Hot Pasta Pot – Med/Lrg	£2.20/£2.50	Whole Fruit	£0.55
Jacket Potato – 1 Topping	£2.10		
ALL POWER BITES			
Range of 8oz Nutritious Rice & Noodle Dishes	£1.30		

VAT on hot food and beverages will be charged at the current rate for all staff members

BREAKFAST	PRICE	HOMEBAKES	PRICE
Breakfast Roll	£1.55	Muffins	£1.30
Mini Breakfast Baguette	£1.55	Small Cakes	£1.00
3 Piece Breakfast Pot	£2.10	Cookies/Brownie	£1.30
Toast with Butter or Jam	£0.35	Chocolate/Cheese Straw	£1.30
Pancake with Topping	£1.25	HOT GRAB & GO	
Waffle with Topping	£1.65	Ciabatta/Bagel	£2.65
Pastries & Croissants	£1.65	Panini – Half/Whole	£1.55/£2.65
Cereals + Milk (8oz)	£1.00	Toastie - Half/Whole	£1.10/£2.20
Porridge for Staff	£1.00	Korean Crispy Chicken	£2.65
Porridge for Students	Free	Tandoori Chicken Naan	£3.00
Porridge Toppings	£0.45	Wrap/Twister	£2.65
COLD GRAB & GO		Chicken Wings	£2.30
Blue Dot Roll	£1.10	Shawarma	£2.65
Deli Sub Roll/Sandwich	£2.20	Pizza Slice (Break Time)	£1.55
Wrap	£2.65	Chicken Fajita Taco Boat	£3.00
Naturally – Premium Salad	£3.00	Hot Bowls	£2.65
Basic Baguette/Premium Baguette	£2.35/£2.65	Hot Pasta Pot – Med/Lrg	£2.20/£2.50
Half Baguette	£1.55	Jacket Potato – 1 Topping	£2.10
Cold Pasta Pot 16oz	£2.50	ALL POWER BITES	
Vegetable Sticks with Humous	£1.60	Range of 8oz Nutritious Rice & Noodle Dishes	£1.30
Protein Pots	£1.00	SOUP	
Salad Pots	£2.00	Fresh Soup Available Daily	£1.80
Yoghurt/Jelly/Fruit Pots	£1.00		
Whole Fruit	£0.55		

VAT on hot food and beverages will be charged at the current rate for all staff members

FREE SCHOOL MEALS

Free school meals (FSM) are available to students whose families meet specific criteria. If you think you may qualify for support, your family can go to the Free School Meals checker by clicking [here](#).

FSM pupils who are in year 6 currently, will have their entitlement extended to end July 2025. If the parent believes they are still entitled, then they will have to reapply for FSM in secondary school [here](#).



SPECIAL EDUCATIONAL NEEDS

If you have any concerns about your learning that you would like to raise with the Learning Support Department, rather than email us, please scan the QR code and use the form below.

This will help us to make sure we follow up on all and keep central records.

Ms Harper is our SENCO and Ms Roohan is our Assistant SENCO. We also have a large team of Learning Support Assistants and Sixth Form Volunteers who may be present to help you learn in your lessons.



STUDENT RECEPTION

We have a student reception where you can go to:

1. Check our 'Lost Property' box.
2. Borrow a voucher to use to buy your lunch if you have run out of money on your account.
3. Call home if you need to contact your family.
4. Visit our Medical Officer, Ms Butler, if you are feeling unwell.
5. Borrow uniform if you have forgotten any.
6. Purchase some basic equipment like black pens, highlighters and purple pens.
7. Ask for any other help if you need it.



TURING HOUSE FRIENDS

Turing House Friends is a PTA that supports the work of Turing House School by bringing the wider school community together through engaging, entertaining, informing and fundraising. They run several brilliant events including Second Hand Uniform sales and a Year 7 BINGO night!

Find out more [here](#).



COMMUNICATION TO THE SCHOOL

Your family should always use info@turinghouseschool.org.uk to contact the school with questions which they may have, and we will always aim to get back to them swiftly.

DATES IN SEPTEMBER

We look forward to seeing you on:

- Wednesday 3rd September - your first day.
- Thursday 4th September - the first day for all of the year groups in the school.



TARGET SETTING

Teachers assess your work continuously, as well as at the end of units of work and at the end of each year. The continuous assessment is often referred to as formative assessment, whereas assessment that takes place at the end of a piece of work is usually referred to as summative assessment. Read more about this and about how we set target grades [here](#).



ASSESSMENT

Three times a year we will give you information about how you are doing. The first piece around February, will just be a number (a stage) for each of your subjects. You will get a formal written report once a year and the year will end with an exam report.



STORAGE

Your tutor room will have coat racks where you can store your PE kit, warm layers, musical instruments and anything else you'd like so that you don't need to worry about carrying too much around.



CONTACT AND FOLLOW US

- Email: info@turinghouseschool.org.uk
- Telephone: 020 8069 6100
- Address: Hospital Bridge Road, Twickenham, TW2 6LH
- Read our Weekly Newsletter on our school website and follow us at @turinghouse on Twitter/X

